

STAN 30 - prizemlje

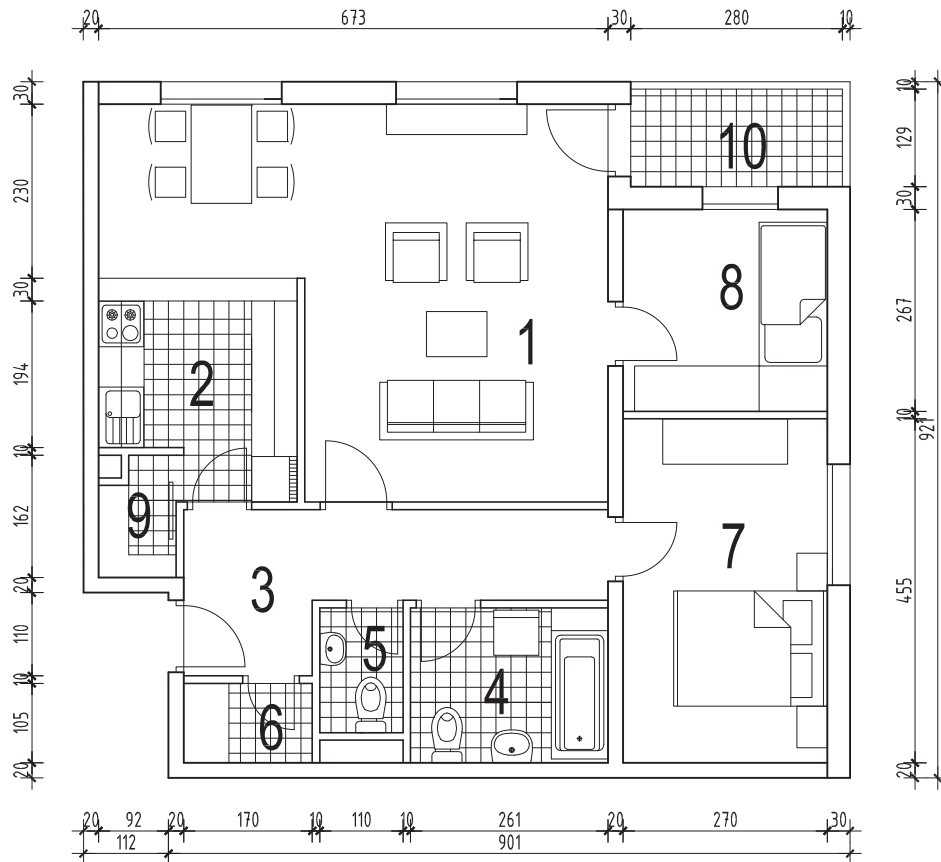
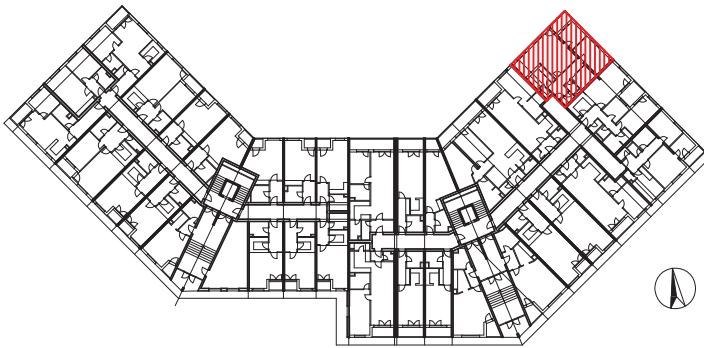
LEGENDA

STAN BR. 30

2.5 S

1. dnevni boravak + blag.	27.33 m ²
2. kuhinja	7.02 m ²
3. ulazni prostor	8.43 m ²
4. kupaonica	5.34 m ²
5. wc	1.81 m ²
6. spremište	1.78 m ²
7. soba 2 osobe	12.28 m ²
8. soba 1 osoba	7.20 m ²
9. izba	1.49 m ²
ukupno	72.68 m²

10. lođa	3.61x0.75	2.70 m ²
sveukupno		75.38 m²



M1:100

